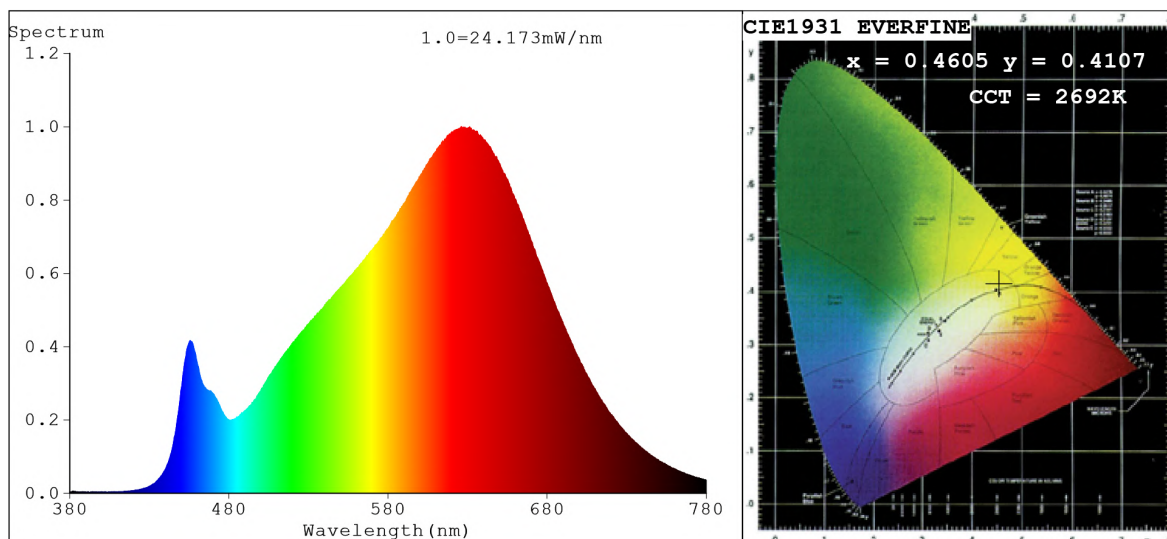


Spectrum Test Report



Color Parameters:

Chromaticity Coordinate: $x=0.4605$ $y=0.4107$ $u'=0.2629$ $v'=0.5275$
 CCT=2692K (Duv=-0.0000) Dominant WL: $\lambda_d = 584.3\text{nm}$ Purity=61.5%
 Ratio: R=26.6% G=70.9% B=2.6%; Peak WL: $\lambda_p = 626.1\text{nm}$ FWHM=148.6nm
 Render Index: Ra=93.8 CRI=91.2 TM30: Rf=90 Rg=99
 R1 =94 R2 =98 R3 =99 R4 =93 R5 =93 R6 =97 R7 =92
 R8 =84 R9 =66 R10=93 R11=93 R12=81 R13=95 R14=99 R15=91

Photo Parameters:

Flux = 1090 lm Eff. : 89.96 lm/W Fe = 3.950 W Scotopic: 1405 S/P: 1.289

Electrical parameters:

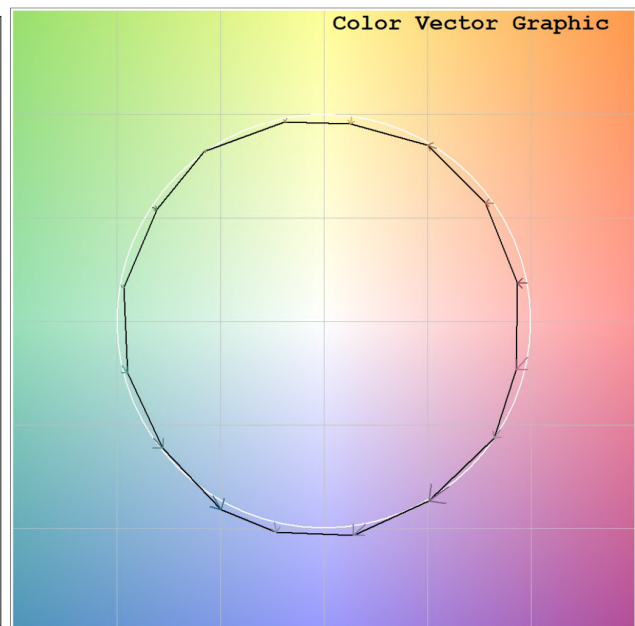
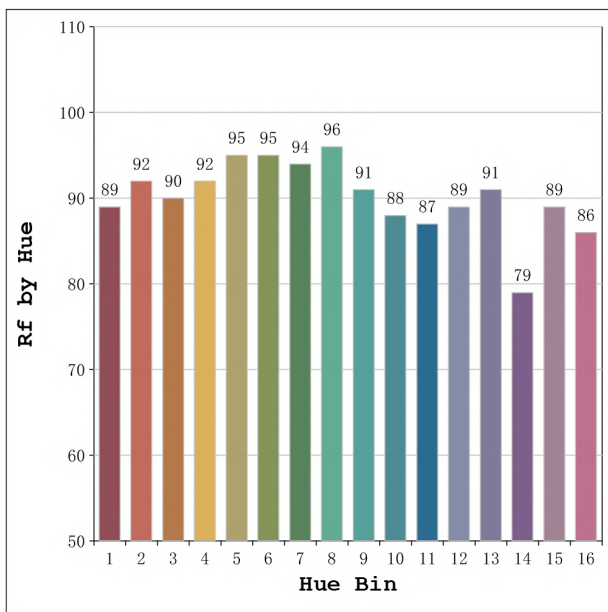
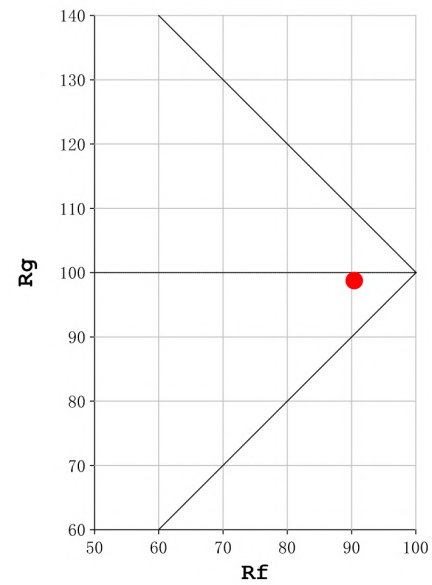
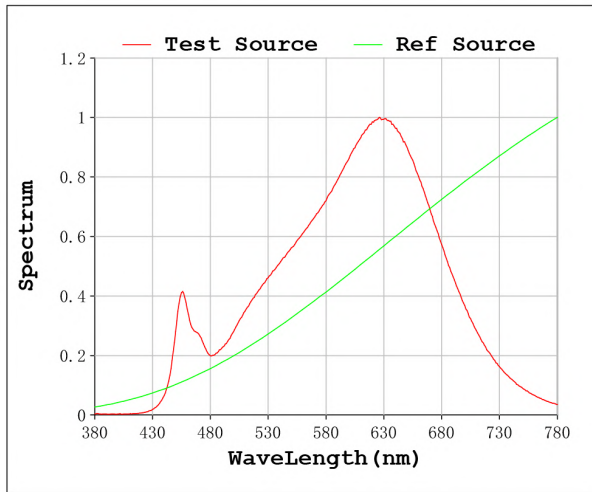
V = 23.998 V I = 0.5049 A P = 12.12 W PF = 1.000

Status: Integral T = 1000 ms Ip = 44329 (68%)

Model: Ecoled Free Cut 2700K
 Tester: Sergio Carneros
 Temperature: 20Deg
 Manufacturer: Luz Negra

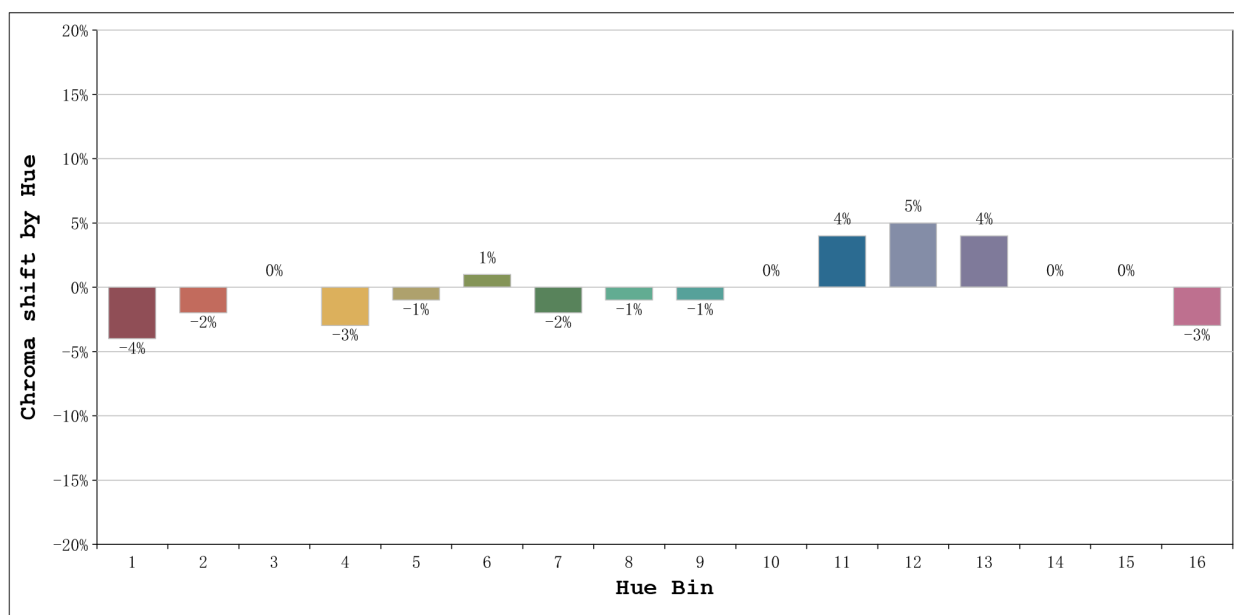
Number: 34.045
 Date: 2023-12-13 10:52:10
 Humidity: 50%
 Remarks: 100cm de tira flexible

Rf: 90 **CCT: 2692 K** **u': 0.2629**
Rg: 99 **Duv: -0.0000** **v': 0.5275**



Model:Ecoled Free Cut 2700K
 Tester:Sergio Carneros
 Temperature:20Deg
 Manufacturer:Luz Negra

Number: 34.045
 Date:2023-12-13 10:52:10
 Humidity:50%
 Remarks:100cm de tira flexible



			Graphic shift(%)	
Hue Bin	Hue Angle	Rf	Chroma	Hue
1	0.0° - 22.5°	89	-4	1
2	22.5° - 45.0°	92	-2	2
3	45.0° - 67.5°	90	0	4
4	67.5° - 90.0°	92	-3	0
5	90.0° - 112.5°	95	-1	1
6	112.5° - 135.0°	95	1	1
7	135.0° - 157.5°	94	-2	0
8	157.5° - 180.0°	96	-1	1
9	180.0° - 202.5°	91	-1	4
10	202.5° - 225.0°	88	0	7
11	225.0° - 247.5°	87	4	7
12	247.5° - 270.0°	89	5	2
13	270.0° - 292.5°	91	4	-6
14	292.5° - 315.0°	79	0	-11
15	315.0° - 337.5°	89	0	-4
16	337.5° - 360.0°	86	-3	-6

Model:Ecoled Free Cut 2700K
 Tester:Sergio Carneros
 Temperature:20Deg
 Manufacturer:Luz Negra

Number: 34.045
 Date:2023-12-13 10:52:10
 Humidity:50%
 Remarks:100cm de tira flexible